

Since 1971

HAYMAN

QUALITY BUILT SAFES

Over 40 Years Strong...



***Peace of mind
you can afford***

Your Hayman Safe Co Authorized Dealer Catalog

Since 1971

HAYMAN

QUALITY BUILT SAFES

Over 40 Years Strong...

Mission Statement

We aspire to provide the highest quality safes and safe related products to satisfy our customer's security needs and to provide superior customer support.

Value Statement

Our Team

Our customers are an essential part of our business and are the foundation for any success we achieve. We will work hard to become their most valuable asset.

Our Ethics

To deal honorably, honestly and sincerely with all.

Our purpose

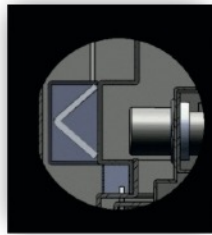
To bring honor to God in all we do.

MagnaVault **EX**

**Burglary & Fire Protection
with a touch of CLASS**



Peace of mind knowing that your valuables are protected from burglary & fire is yours with a *MagnaVault* **EX**.



We start with a strong composite material in the body and door that is burglar resistant and then we add:

- Tempered glass & mechanical re-lockers
- Drill-resistant hard plate in the door and body.
- Extra heavy duty bolt work.
- UL-RSC burglary tested & rated.
- **EX** Package: 7-step paint finish, Interior lighting, tempered glass shelving, accessory panel, electronic lock.

Fire Protection

105 Minute @ 1200° Laboratory Tested Fire Rating
Real Fire Protection from Heat, Smoke, & Water.

Model	Outside HxWxD	Inside HxWxD	Wt. lbs	Cu Ft
MV EX-1512	20 $\frac{1}{4}$ x 17 $\frac{1}{4}$ x 18 $\frac{3}{4}$	15 x 12 x 11 $\frac{7}{8}$	265	1.23
MV EX-2116	26 $\frac{3}{8}$ x 21 $\frac{3}{4}$ x 21 $\frac{3}{4}$	21 x 16 $\frac{1}{4}$ x 14 $\frac{3}{4}$	415	2.90
MV EX-2916	34 x 21 $\frac{3}{4}$ x 21 $\frac{3}{4}$	28 $\frac{3}{4}$ x 16 $\frac{1}{4}$ x 14 $\frac{3}{4}$	525	3.98
MV EX-3516	40 x 21 $\frac{3}{4}$ x 21 $\frac{3}{4}$	34 $\frac{3}{4}$ x 16 $\frac{1}{4}$ x 14 $\frac{3}{4}$	570	4.80
MV EX-4020	45 $\frac{1}{4}$ x 25 $\frac{1}{2}$ x 27 $\frac{1}{2}$	40 x 20 x 20	810	9.26

Add 2 1/4" to the depth for handle clearance

DynaVault

Fire & Burglary Protection

The newly designed *DynaVault* has met the challenge of providing **Protection and Value.**



Model	Outside HxWxD	Inside HxWxD	Wt. lbs	Cu Ft
DV-1519	18 x 22 x 20	14 x 18 $\frac{1}{8}$ x 12 $\frac{7}{8}$	193	1.9
DV-2219	25 x 22 x 20	21 x 18 $\frac{1}{8}$ x 12 $\frac{7}{8}$	266	2.84
DV-3019	33 x 22 x 20	29 x 18 $\frac{1}{8}$ x 12 $\frac{7}{8}$	308	4.0

Add 2 1/8" for handle clearance.

- 1/4" thick solid steel door
- 75 minute @ 1200° fire protection
- 3 way boltwork (DV-2219 & DV-3019)
- 1 1/4" dia. chrome plated boltwork
- Adjustable shelves
- Fabric lined interior
- Tri-spoke handle
- Spring-loaded re-locker
- Powder coat finish
- Drill-resistant hardplate
- Combo or electronic lock



Stands, Custom Cabinets and Boxes for the Special Stuff!



The **Safe Stand** elevates the safe to a more convenient height. Available for the MagnaVault EX and DynaVault lines this is a nice accessory that makes your safe easier to use. Secures to the floor and to the safe for burglar resistance.

The **Jewelry Cabinet** has 4 drawers and comes with one each of 3 trays with a velour liner in the last drawer. It will fit all MVEX (except the MVEX-1512).

The **Jewelry Box** has one each of 3 pull out trays and fits all of the DV, MVEX (except the MVEX-1512).

FlameVault

1&2 hour Record Safes



Not all dangers wear a mask and steal in the night. Sometimes we must protect from natural dangers such as FIRE. The FlameVault by HAYMAN is the highest level of protection for this threat.

Model	Outside HxWxD	Inside HxWxD	Wt. lbs	Cu Ft
1 hour				
FV-132C/E	12 $\frac{1}{8}$ x 16 $\frac{1}{2}$ x 14	8 x 12 $\frac{3}{8}$ x 9 $\frac{1}{4}$	78	0.53
FV-137C/E	14 $\frac{1}{4}$ x 19 $\frac{1}{4}$ x 16 $\frac{3}{4}$	9 $\frac{1}{4}$ x 15 x 12	105	0.96
FV-151C/E	19 $\frac{3}{8}$ x 13 $\frac{3}{4}$ x 16 $\frac{3}{4}$	15 x 9 $\frac{1}{4}$ x 12	119	0.96
2 hour				
FV-261E/C	22 $\frac{1}{8}$ x 18 $\frac{1}{4}$ x 18 $\frac{3}{8}$	16 $\frac{3}{4}$ x 12 $\frac{3}{4}$ x 12 $\frac{3}{8}$	187	1.53
FV-275E	27 x 21 x 20	21 $\frac{1}{4}$ x 15 $\frac{1}{4}$ x 13 $\frac{1}{2}$	272	2.53
FV-288E	32 x 23 $\frac{1}{4}$ x 20	26 $\frac{1}{8}$ x 17 $\frac{1}{2}$ x 13 $\frac{3}{8}$	365	3.54
FV-2100E	37 x 23 $\frac{5}{8}$ x 21	30 $\frac{1}{2}$ x 17 $\frac{1}{2}$ x 14 $\frac{1}{8}$	415	4.36
FV-2120E	45 x 27 $\frac{5}{8}$ x 25	37 $\frac{1}{8}$ x 20 $\frac{3}{4}$ x 18	550	8.02

C= combo lock / E=import electronic lock

Add 2" to the depth for handle clearance

1 Hour Safes (3 sizes):

- Removable drawer.
- Tri-spoke handle with combo lock.
- Electronic lock available on all sizes.
- Bolt down hole provided.

2 Hour Safes (5 sizes):

- Locking and non locking drawers.
- Auto locking door detent.
- Electronic or combination locks on select models.
- Bolt down hole provided.

CV WS-7

The last wall safe you will ever need.

Protection placed right where you need it most. This flush mounting wall safe fits in any 6" or 4" deep wall. *Use the optional wall spacer for a 4" installation.* Thick Steel formed body and $\frac{1}{4}$ " Solid Steel door locks using a full $\frac{1}{2}$ " dia. Stainless Steel bolt. The safe is protected with a UL listed Type 1 Electronic Lock and has two removable shelves.



OD 17 $\frac{5}{8}$ "H x 16 $\frac{1}{2}$ "W x 6"D including the flange
 ID 15 $\frac{1}{4}$ "H x 14"W x 4"D
 Weight is only 47 lbs., .50 Cu Ft.
 Rough-in opening required 15 $\frac{1}{2}$ "H x 14 $\frac{1}{2}$ "W x 5 $\frac{7}{8}$ "D

Everglades

**Strength, Style
and Reliability**

60

Minute Fire
Protection @
1200°



We continue to improve and update the
Everglades Gun Safe by HAYMAN Safe Co.

We begin with a continuous sheet of 11 gauge steel and then bend, fold and shape it to create a body much stronger than welded sheet metal. The door is protected with large heavy duty bolt-work, locking in all four directions and able to resist attacks from all sides.

Our versatile fabric lined interior adapts to many collections meeting your personal needs.

- 11 Gauge Steel Construction
- UL listed Top lit Electronic Lock
- Drill resistive hard plate
- Spring loaded re-lock system
- 1¼ Three way active bolt-work
- 1¼ Dead locking hinge side bolts
- Powder Coat Finish
- Satin Black
- Chrome accents
- 3 & 5 spoke handles
- Door organizer
- Gun rack cover
- Adjustable Hinges
- Clutch driven bolt-work
- 4 anchor holes in bottom
- Access hole for power cord
- 1 hour fire protection
- Heat activated door seal

Model	Outside HxWxD	Inside HxWxD	Wt. lbs	Cu Ft	Gun Capacity
EV 5922	59 x 22 x 16	56 x 19½ x 10	408	6.15	16
EV 5930	59 x 30 x 24	55 x 26¼ x 17	587	14.2	22
EV 7242	72 x 42 x 26	68⅞ x 39½ x 21	921	32.8	45

Blue Ridge

All the extras at a price you can afford!



90
Minute Fire
Protection @
1200°

Loaded with features, the *Blue Ridge* gun safes have all the extras you are looking for at a price you can afford! With the added burglary protection from the 1/4" thick solid steel door & 11g steel body to the intumescent door seal & 3 layers of fire board throughout giving 90 min fire protection, this is the safe for you.

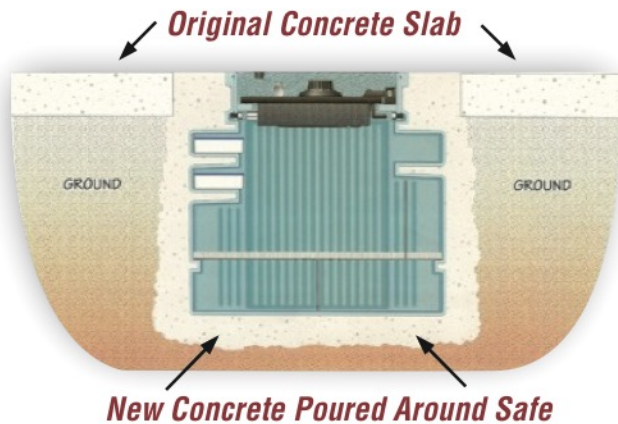
- UL Listed RSC Security Label
- 1/4" solid steel door plus 3 layers of fireboard
- 11ga Steel body construction plus 3 fire boards
- UL listed Top lit Electronic Lock
- Clutch drive 5 spoke dark chrome handle
- Drill resistive hard plate & Spring loaded re-lock
- 1 1/2" 3 way active bolt-work + dead locking hinge bolts
- Extra Heavy Duty Adjustable Hinges
- Premium Door Organizer
- Light Gray upgraded fabric
- Auto on LED lighting
- Mirrored interior back
- 110VAC and USB power outlet
- 1 1/2 hour fire protection
- Heat activated door seal
- 4 anchor holes in bottom

Model	Outside HxWxD	Inside HxWxD	Wt. lbs	Cu Ft	Gun Capacity
BR 5930	59 x 30 x 24	55 x 26 1/4 x 17	664	14.2	22
BR 7242	72 x 42 x 26	68 3/8 x 39 1/2 x 21	1070	32.82	45

The Best In-Floor Safes Made.

Proudly Made in America!

The HAYMAN line of Steel Body or Poly Body In-floor safes has been a staple in the safe industry for decades. Our patented lift off doors and our patented poly-body construction gives you protection incomparable with any other safe of this type. The inherent fire resistance coming from the installation can't be beat at any cost.



- ***Combo or electronic locks.***
- ***1/2" or 1" thick steel door.***
- ***Drill-resistant hardplate.***
- ***Spring-loaded re-locker.***
- ***Interchangeable doors.***
- ***Construction seal available.***
- ***Removable dust cover fits flush with floor.***

These safes carry the **HAYMAN Lifetime Fire and Burglary Guarantee** when properly installed in a concrete foundation.



FS4000



FS16T

Model	Outside HxWxD	Inside HxWxD	Wt. lbs	Cu Ft
Steel Body				
FS8	12¼ x 15¾ x 14¼	9 x 14 x 13¼	80	.97
FS16	20¼ x 15¾ x 14¼	17 x 14 x 13¼	105	1.79
FS16D	20¼ x 29½ x 14¼	17 x 27¼ x 13¼	165	3.55
FS16T	20¼ x 43¾ x 14¼	17 x 41¼ x 13¼	222	5.38
Poly-Body				
S1200	15 x 15 x 10¼	11½ x 14½ x 8	42	.76
FS2300	15 x 18½ x 15½	12 x 17 x 13¼	76	1.35
FS4000	20¼ x 21¾ x 15½	17 x 20¼ x 13¼	88	2.39

Custom Safes

Proudly Made in the U.S.A.

Can't find what you need in our regular product lines?

Chances are, we can make it for you. Using our 45+ years of experience building customs of just about every size and shape, we've got what it takes to build what you need.

Please be aware that any custom safe requires a quote submitted by an Authorized Dealer, a rough sketch that includes (at minimum) the dimensions, lock types and steel thickness.

Custom depository safes are by far the most common type of custom safe we do. Of these, the rear load depository is the most popular. These safes can be made in almost any size with a chute designed to fit through almost any wall.

Our Custom Steel safes represent just about everything that is NOT a Depository Safe. We've done everything from oversize E-Rate safes (*1 inch thick steel body w/ 1.5 inch thick steel door*) to small locker sets.

We can create inner lockers, drawers, just about any configuration of shelves, etc., in just about any size safe.



Custom Interiors

It is hard to make a great product better, but by adding a custom interior to a MagnaVault or DynaVault safe, you can take an already premium quality product and add elegance and convenience to it.

Each custom interior is hand-crafted individually to your exact specifications giving you exactly what you need in an exceptionally attractive package.

Visit:

HaymanSafe.com/Custom Safes

For more information and pictures of what we can do for your specific needs.

Since 1971

HAYMAN

QUALITY BUILT SAFES

Over 40 Years Strong...

Nothing but Cold Hard STEEL goes into every

CASHVAULT

by Hayman Safe Co.

Transitioning in 2019
to All Black Powder Coat Finish



The "CASHVAULT" by Hayman continues the tradition started over 40 years ago to build the best in "B" rated burglar resistive security containers.

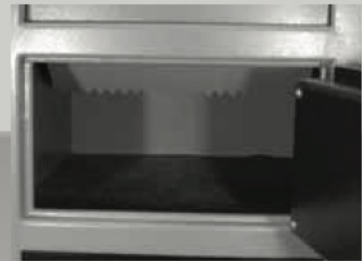
- Our steel bodies are formed from solid steel and are reinforced in and around the door frame for strength and security. Four holes are provided in the bottom for securely anchoring to the floor.
- The doors are 1/2" solid steel and backed up with specially hardened drill resistive plate.
- All doors have a spring loaded re-locking system to dead lock the bolt work in the event of a forcible entry attempt.
- We have added saw tooth baffles to prevent fishing in the front loader and enlarged the rotary hopper for ease of use in the top loader.



Extra Heavy Duty Hinge



Large Chrome Plated Bolts



Baffling Protecting Deposits

- We have added a detent system that will automatically extend the bolts whenever the door is closed.
- Our finish is a gray and black powder coating that is more durable and environmentally safer than the wet spray finish others use.
- Only U.L. Approved locks are used, assuring reliability in daily commercial operation.

Keeping your cash deposits safe and away from outsiders as well as unauthorized employees is at the heart of each of these units.

CASH VAULT

by Hayman Safe Co.



CV 14 E



CV 20 C



CV 27 C

CASH VAULTS are available with Key, Combination or Electronic Locks (K, C, E) as indicated in the part numbers.

Model	Outside Dim HxWxD	Inside Dim HxWxD	Weight in lbs	CIC/CFC	Shelves
CV 14 (C,E)	14 x 14 x 14	13 ⁵ / ₈ x 13 ³ / ₈ x 11	69 lbs	2042 / 1.2	1
CV 20 (C,E)	20 x 15 x 15	19 ⁵ / ₈ x 14 ⁵ / ₈ x 12	79 lbs	3444 / 2.0	1
CV 20D (C,E)	20 ¹ / ₂ x 20 ¹ / ₂ x 22	20 ¹ / ₈ x 20 ¹ / ₈ x 19	140 lbs	7600 / 4.4	1
CV 27 (C,E)	27 x 19 x 17	26 ⁵ / ₈ x 18 ⁵ / ₈ x 14	165 lbs	6942 / 4.0	1

Front & Top Load Depositories

E Locks are Optional • C Locks are Standard



CV F20C



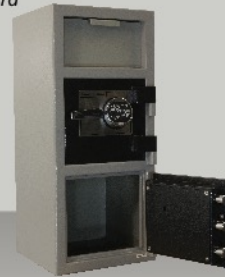
CV H20E



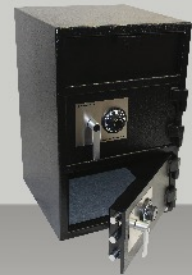
CV F27C



CV F30WC



CV F32-2EC



CV F30W-2CC

Model	Outside Dim HxWxD	Inside Dim HxWxD	Weight in lbs	CIC/CFC	Depository Opening HxWxD
CV F20 (K,C,E)	20 x 14 x 14	8 ¹ / ₄ x 13 ³ / ₈ x 11	90 lbs	1836 / 1.0	5 x 10 ¹ / ₂ x 10 ³ / ₄
CV H20 (C,E)	20 x 14 x 14	12 ³ / ₄ x 13 ³ / ₈ x 11	93 lbs	1911 / 1.1	6 ¹ / ₄ x 4 ¹ / ₂ x 9
CV F27 (C,E)	27 x 14 x 14	15 ¹ / ₂ x 13 ³ / ₈ x 11	119 lbs	2323 / 1.3	5 x 10 ¹ / ₂ x 10 ³ / ₄
CV F30W (C,E)	30 x 20 x 20	18 x 19 ⁵ / ₈ x 17	185 lbs	6005 / 3.5	4 ¹ / ₄ x 15 ³ / ₄ x 11 ¹ / ₄
CV F30W ILK (C,E) W/ Inner Locker with Key	30 x 20 x 20	4 ¹ / ₂ x 19 ¹ / ₂ x 14 ¹ / ₂ (locker) 9 ³ / ₄ x 16 ⁷ / ₈ x 17 ¹ / ₂ (bottom)	211 lbs	6005 / 3.5	4 ¹ / ₂ x 15 ³ / ₄ x 11 ¹ / ₄
CV F32-2 (C,E/C,E)	32 x 14 x 14	8 ¹ / ₄ x 13 ³ / ₈ x 11 (top) 12 x 13 ³ / ₈ x 11 (bottom)	150 lbs	2998 / 1.7	5 x 10 ¹ / ₂ x 10 ³ / ₄
CV F30W-2 (K,C,E/C,E)	30 x 20 x 20	7 x 19 ⁵ / ₈ x 17 (top) 11 x 19 ⁵ / ₈ x 17 (bottom)	194 lbs	6005 / 3.5	4 ¹ / ₄ x 15 ³ / ₄ x 11 ¹ / ₄

Budget Crunching Drop Safes with 2 Key Locks



CV SL8K



CV SL12K



CV H13K



CV H19-2KK

No frills, just strength and security. Full "B" rate body with 1/2" solid steel door AND re-lockers.

Model	Outside Dim HxWxD	Inside Dim HxWxD	Weight in lbs	CIC/CFC	Depository Opening HxWxD
CV SL8K	8 x 6 x 12	7 x 5 ⁵ / ₈ x 10 ¹ / ₂	20 lbs	413 / .24	5 ⁵ / ₈ x 5 ³ / ₄ x 3 ¹ / ₂
CV SL12K	12 x 6 x 8	11 x 5 ⁵ / ₈ x 6 ¹ / ₂	23 lbs	402 / .23	5 ⁵ / ₈ x 5 ³ / ₄ x 3 ¹ / ₂
CV H13K	13 x 8 ¹ / ₄ x 11 ³ / ₄	5 ³ / ₄ x 8 ¹ / ₄ x 9 ¹ / ₄	44 lbs	432 / .25	6 ¹ / ₄ x 4 ¹ / ₂ x 7 ⁵ / ₈
CV H19-2 (CC or KK)	19 x 8 ¹ / ₄ x 12	5 ³ / ₄ x 8 ¹ / ₄ x 9 ¹ / ₄ (top) 5 ³ / ₄ x 8 ¹ / ₄ x 9 ¹ / ₄ (bottom)	68 lbs	864 / .5	6 ¹ / ₄ x 4 ¹ / ₂ x 7 ⁵ / ₈

Since 1971

HAYMAN

QUALITY BUILT SAFES

Over 40 Years Strong...

Warranty

All Hayman Safe Company products carry a warranty to the original retail purchaser to be free from defects in material and workmanship. Standard models are warranted for ONE (1) year from the original date of purchase.

This warranty applies only to new safes purchased from Hayman Safe Company or its authorized dealers. Proof of purchase must be provided so as to establish date of purchase and supplying dealer. Hayman Safe Company will, at our option, repair or replace any defective part or unit.

Authorization must be received from Hayman Safe Company prior to performance of any service which will be submitted under warranty.

Improper installation, improper use, lack of proper maintenance or accidental damage will nullify this warranty. No other warranty, expressed or implied, is offered. This warranty cannot be changed, modified, enlarged or altered without direct written consent from Hayman Safe Company.

Hayman Safe Company is not responsible for consequential damage, incidental expenses or personal injury. This warranty gives you specific legal rights. You may have other rights which vary from state to state.

Guarantee

BURGLARY PROTECTION

Hayman Safe Company will, at our option, replace or repair any MV, DV, EV, BR, CV or properly installed Original Series safe if they are ever successfully burglarized. To claim this guarantee, ship the burglarized safe and a copy of the police report to us. We will repair or replace the safe and return it to you. Improper installation can nullify this guarantee.

FIRE PROTECTION

Hayman Safe Company will, at our option, replace or repair any MV, DV, EV, BR, FV or properly installed Original Series safe if its contents are ever damaged by fire. To claim this guarantee, ship the fire damaged safe and a copy of the fire department report to us. We will repair or replace the safe and return it to you. Improper installation can nullify this guarantee.

www.HaymanSafe.com

©Copyright 2019 Hayman Safe